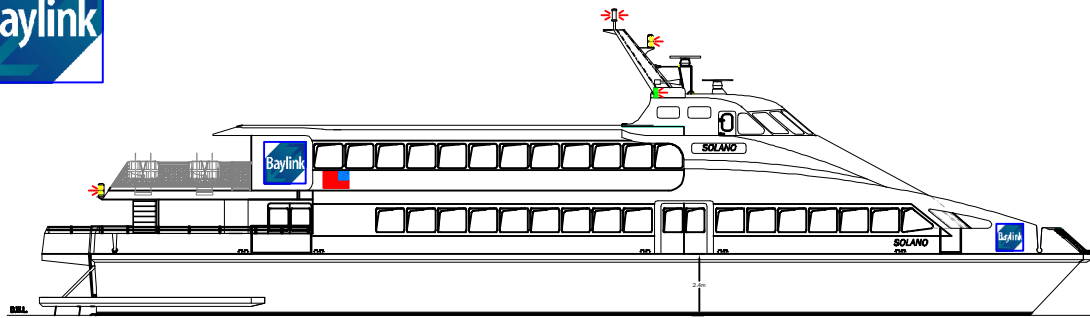
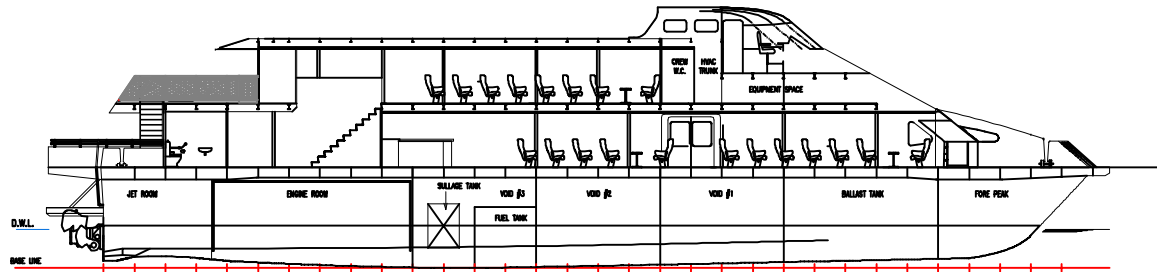




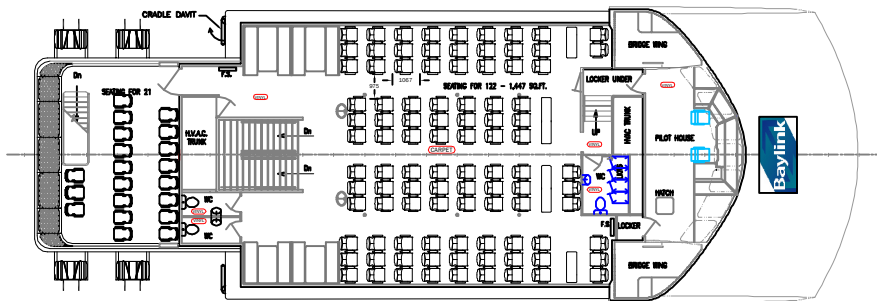
- DAKOTA CREEK / VALLEJO BAYLINK FERRIES -



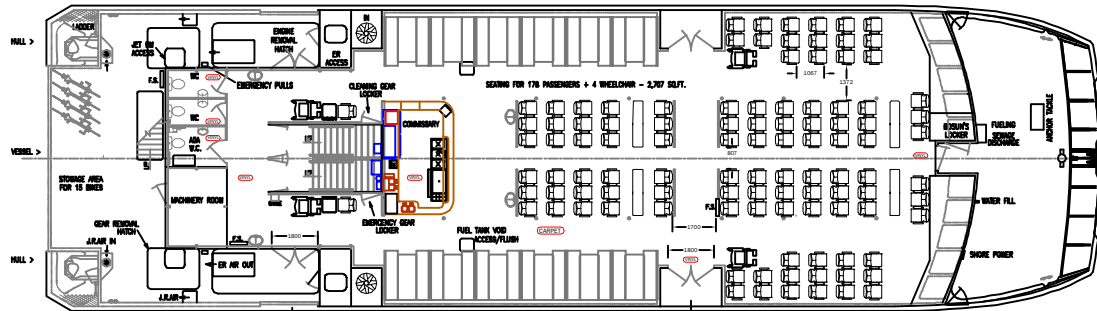
- OUTBOARD PROFILE -



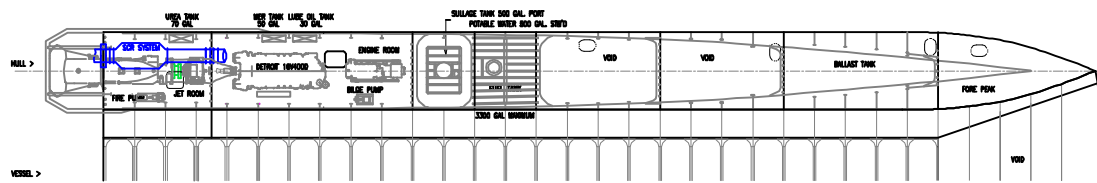
-INBOARD PROFILE -



- UPPER DECK ARRANGEMENT -



- MAIN DECK ARRANGEMENT -



- PLAN OF UNDER DECK -

GENERAL PARTICULARS

LENGTH OVERALL 41.27m 135.40 ft.
 LENGTH WATERLINE 36.23m 118.83 ft.
 BEAM OVERALL 12.00m 39.36 ft.
 BEAM MOULDED 11.50m 37.72 ft.
 BEAM OF HULL 3.00m 9.84 ft.
 DRAFT MAX 1.50m 4.92 ft.
 SEATING: 300 Internal+21 External



ADVANCED MULTIMEDIA DESIGNS, P.C. Inc.
 100 WESTERN AVENUE, SUITE 200
 P.O. BOX 200, SUITE 200, FIDELITY, CA 94924-0200
 TEL: 415-448-8888 FAX: 415-448-8888
 WWW: WWW.AMDDESIGNS.COM
 THIS DRAWING ALWAYS REMAINS THE PROPERTY OF
 ADVANCED MULTIMEDIA DESIGNS, P.C. INC. AND THE CONTENTS
 ARE CONFIDENTIAL. IT IS TO BE USED ONLY FOR THE PROJECT
 AND MUST NOT BE COPIED OR REPRODUCED TO A
 THIRD PARTY WITHOUT WRITTEN PERMISSION.
 © COPYRIGHT 2003

VALLEJO - BAYLINK
 HIGH SPEED CATAMARAN FERRY
 GENERAL ARRANGEMENT

Dakota Creek Industries, Inc.
 100 WESTERN AVENUE, SUITE 200
 P.O. BOX 200, SUITE 200, FIDELITY, CA 94924-0200
 TEL: 415-448-8888 FAX: 415-448-8888

DRAWN: RCL DATE: 11/10/03
 CHECKED: RMH DATE: 11/10/03
 SCALE: 1:100
 DCI DRAWING No: 8700.010.001