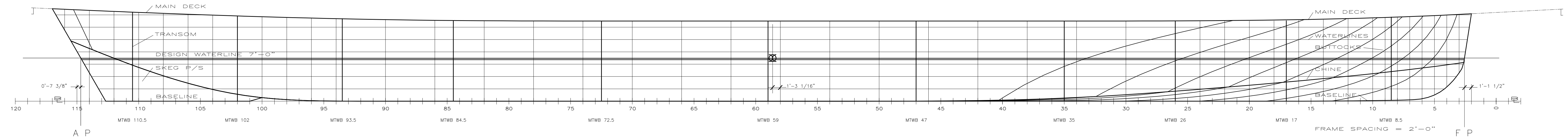


SECTIONS

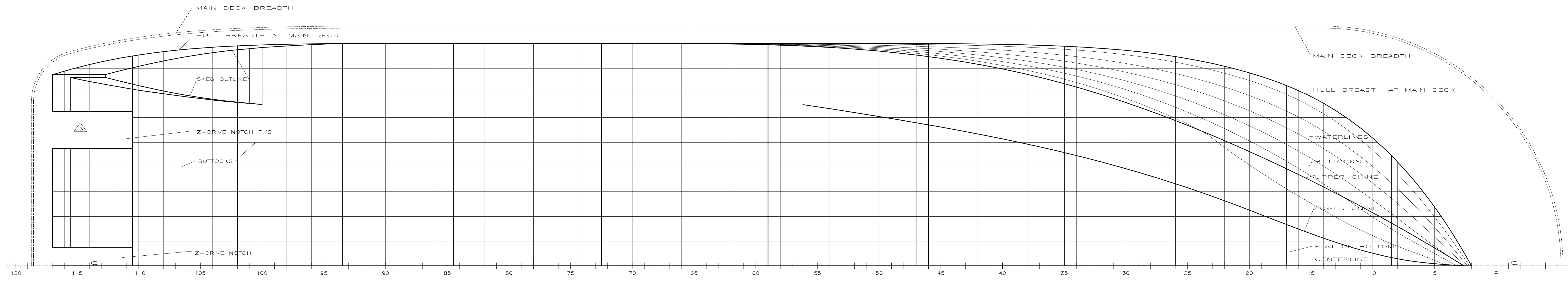
CHARACTERISTICS

LENGTH OVERALL	245'-0"
LENGTH BETWEEN PERPENDICULARS	224'-3 1/8"
BREADTH OVERALL	77'-8"
HULL BREADTH	72'-0"
HULL DEPTH	13'-0"
DESIGN DRAFT	7'-0"



PROFILE OF HEIGHTS

1/8"



PLAN OF BREADTHS

1/8"

REFERENCES				REVISIONS			
NO.	DRAWING TITLE	DWG. NO.	BY	NO.	DESCRIPTION	DATE	BY
1				1	REVISED AS PER FINAL WGT EST.	11-1-93	RLF
2				2	FINAL REVISION	11-3-93	RLF
3				3	REVISED OUTBOARD Z-DRIVE NOTCH	11-30-93	RLF
4				4	GENERAL REVISION & LABEL BODY PLAN	6-16-94	EAM

RODNEY E. LAY & ASSOCIATES
 NAVAL ARCHITECTS
 1591 ATLANTIC BOULEVARD, JACKSONVILLE, FLORIDA 32225

This design, including specifications, drawings and its contents, are the exclusive property of Rodney E. Lay & Associates, and is furnished on a confidential basis with the expressed agreement that it will not be used, transferred, copied, loaned, photographed or reproduced in any manner whatsoever in whole or in part, nor any item herein be built, manufactured or assembled with the aid thereof without the written agreement of Rodney E. Lay & Associates. The recipient agrees not to disclose to any other party information herein, nor to use such information except for the specific purpose contracted for.

240' X 77' CASINO VESSEL FOR ARGOSY - RIVERSIDE

LINES PLAN
 SCALE 1/8" = 1'-0" DATE 8-31-93 DRAWN BY RLF CKD REL DWG. NO. 2996-C12 REV. 4